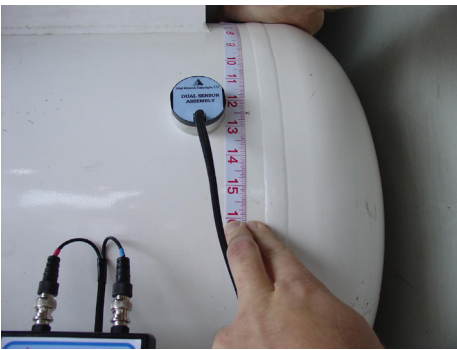




# OVERFILL PROTECTION DEVICE DIAGNOSTIC SERVICES

The **Maximus™ Overfill Diagnostic Instrument** provides a means to verify functionality of overfill protection devices (OPD) in LP Gas tanks. Instrument externally verifies the filling level of LP Gas through innovative sonic technology.



SENSOR POSITION MEASUREMENT

Date	Tank	Before Outage Stage		After Outage Stage		Maximum Volume (gallons)	Volume before Outage (gallons)	Volume after Outage (gallons)	Difference (gallons)	Comments
		OPD On/Off	OPD On/Off	OPD On/Off	OPD On/Off					
10/15/11	101	Yes	Yes	Yes	Yes	11.25	11.25	11.25	0.00	
10/15/11	102	Yes	Yes	Yes	Yes	11.25	11.25	11.25	0.00	
10/15/11	103	Yes	Yes	Yes	Yes	11.25	11.25	11.25	0.00	
10/15/11	104	Yes	Yes	Yes	Yes	11.25	11.25	11.25	0.00	
10/15/11	105	Yes	Yes	Yes	Yes	11.25	11.25	11.25	0.00	
10/15/11	106	Yes	Yes	Yes	Yes	11.25	11.25	11.25	0.00	
10/15/11	107	Yes	Yes	Yes	Yes	11.25	11.25	11.25	0.00	
10/15/11	108	Yes	Yes	Yes	Yes	11.25	11.25	11.25	0.00	
10/15/11	109	Yes	Yes	Yes	Yes	11.25	11.25	11.25	0.00	
10/15/11	110	Yes	Yes	Yes	Yes	11.25	11.25	11.25	0.00	
10/15/11	111	Yes	Yes	Yes	Yes	11.25	11.25	11.25	0.00	
10/15/11	112	Yes	Yes	Yes	Yes	11.25	11.25	11.25	0.00	
10/15/11	113	Yes	Yes	Yes	Yes	11.25	11.25	11.25	0.00	
10/15/11	114	Yes	Yes	Yes	Yes	11.25	11.25	11.25	0.00	
10/15/11	115	Yes	Yes	Yes	Yes	11.25	11.25	11.25	0.00	
10/15/11	116	Yes	Yes	Yes	Yes	11.25	11.25	11.25	0.00	
10/15/11	117	Yes	Yes	Yes	Yes	11.25	11.25	11.25	0.00	
10/15/11	118	Yes	Yes	Yes	Yes	11.25	11.25	11.25	0.00	
10/15/11	119	Yes	Yes	Yes	Yes	11.25	11.25	11.25	0.00	
10/15/11	120	Yes	Yes	Yes	Yes	11.25	11.25	11.25	0.00	
10/15/11	121	Yes	Yes	Yes	Yes	11.25	11.25	11.25	0.00	
10/15/11	122	Yes	Yes	Yes	Yes	11.25	11.25	11.25	0.00	
10/15/11	123	Yes	Yes	Yes	Yes	11.25	11.25	11.25	0.00	
10/15/11	124	Yes	Yes	Yes	Yes	11.25	11.25	11.25	0.00	
10/15/11	125	Yes	Yes	Yes	Yes	11.25	11.25	11.25	0.00	
10/15/11	126	Yes	Yes	Yes	Yes	11.25	11.25	11.25	0.00	
10/15/11	127	Yes	Yes	Yes	Yes	11.25	11.25	11.25	0.00	
10/15/11	128	Yes	Yes	Yes	Yes	11.25	11.25	11.25	0.00	
10/15/11	129	Yes	Yes	Yes	Yes	11.25	11.25	11.25	0.00	
10/15/11	130	Yes	Yes	Yes	Yes	11.25	11.25	11.25	0.00	
10/15/11	131	Yes	Yes	Yes	Yes	11.25	11.25	11.25	0.00	
10/15/11	132	Yes	Yes	Yes	Yes	11.25	11.25	11.25	0.00	
10/15/11	133	Yes	Yes	Yes	Yes	11.25	11.25	11.25	0.00	
10/15/11	134	Yes	Yes	Yes	Yes	11.25	11.25	11.25	0.00	
10/15/11	135	Yes	Yes	Yes	Yes	11.25	11.25	11.25	0.00	
10/15/11	136	Yes	Yes	Yes	Yes	11.25	11.25	11.25	0.00	
10/15/11	137	Yes	Yes	Yes	Yes	11.25	11.25	11.25	0.00	
10/15/11	138	Yes	Yes	Yes	Yes	11.25	11.25	11.25	0.00	
10/15/11	139	Yes	Yes	Yes	Yes	11.25	11.25	11.25	0.00	
10/15/11	140	Yes	Yes	Yes	Yes	11.25	11.25	11.25	0.00	
10/15/11	141	Yes	Yes	Yes	Yes	11.25	11.25	11.25	0.00	
10/15/11	142	Yes	Yes	Yes	Yes	11.25	11.25	11.25	0.00	
10/15/11	143	Yes	Yes	Yes	Yes	11.25	11.25	11.25	0.00	
10/15/11	144	Yes	Yes	Yes	Yes	11.25	11.25	11.25	0.00	
10/15/11	145	Yes	Yes	Yes	Yes	11.25	11.25	11.25	0.00	
10/15/11	146	Yes	Yes	Yes	Yes	11.25	11.25	11.25	0.00	
10/15/11	147	Yes	Yes	Yes	Yes	11.25	11.25	11.25	0.00	
10/15/11	148	Yes	Yes	Yes	Yes	11.25	11.25	11.25	0.00	
10/15/11	149	Yes	Yes	Yes	Yes	11.25	11.25	11.25	0.00	
10/15/11	150	Yes	Yes	Yes	Yes	11.25	11.25	11.25	0.00	
10/15/11	151	Yes	Yes	Yes	Yes	11.25	11.25	11.25	0.00	
10/15/11	152	Yes	Yes	Yes	Yes	11.25	11.25	11.25	0.00	
10/15/11	153	Yes	Yes	Yes	Yes	11.25	11.25	11.25	0.00	
10/15/11	154	Yes	Yes	Yes	Yes	11.25	11.25	11.25	0.00	
10/15/11	155	Yes	Yes	Yes	Yes	11.25	11.25	11.25	0.00	
10/15/11	156	Yes	Yes	Yes	Yes	11.25	11.25	11.25	0.00	
10/15/11	157	Yes	Yes	Yes	Yes	11.25	11.25	11.25	0.00	
10/15/11	158	Yes	Yes	Yes	Yes	11.25	11.25	11.25	0.00	
10/15/11	159	Yes	Yes	Yes	Yes	11.25	11.25	11.25	0.00	
10/15/11	160	Yes	Yes	Yes	Yes	11.25	11.25	11.25	0.00	
10/15/11	161	Yes	Yes	Yes	Yes	11.25	11.25	11.25	0.00	
10/15/11	162	Yes	Yes	Yes	Yes	11.25	11.25	11.25	0.00	
10/15/11	163	Yes	Yes	Yes	Yes	11.25	11.25	11.25	0.00	
10/15/11	164	Yes	Yes	Yes	Yes	11.25	11.25	11.25	0.00	
10/15/11	165	Yes	Yes	Yes	Yes	11.25	11.25	11.25	0.00	
10/15/11	166	Yes	Yes	Yes	Yes	11.25	11.25	11.25	0.00	
10/15/11	167	Yes	Yes	Yes	Yes	11.25	11.25	11.25	0.00	
10/15/11	168	Yes	Yes	Yes	Yes	11.25	11.25	11.25	0.00	
10/15/11	169	Yes	Yes	Yes	Yes	11.25	11.25	11.25	0.00	
10/15/11	170	Yes	Yes	Yes	Yes	11.25	11.25	11.25	0.00	
10/15/11	171	Yes	Yes	Yes	Yes	11.25	11.25	11.25	0.00	
10/15/11	172	Yes	Yes	Yes	Yes	11.25	11.25	11.25	0.00	
10/15/11	173	Yes	Yes	Yes	Yes	11.25	11.25	11.25	0.00	
10/15/11	174	Yes	Yes	Yes	Yes	11.25	11.25	11.25	0.00	
10/15/11	175	Yes	Yes	Yes	Yes	11.25	11.25	11.25	0.00	
10/15/11	176	Yes	Yes	Yes	Yes	11.25	11.25	11.25	0.00	
10/15/11	177	Yes	Yes	Yes	Yes	11.25	11.25	11.25	0.00	
10/15/11	178	Yes	Yes	Yes	Yes	11.25	11.25	11.25	0.00	
10/15/11	179	Yes	Yes	Yes	Yes	11.25	11.25	11.25	0.00	
10/15/11	180	Yes	Yes	Yes	Yes	11.25	11.25	11.25	0.00	
10/15/11	181	Yes	Yes	Yes	Yes	11.25	11.25	11.25	0.00	
10/15/11	182	Yes	Yes	Yes	Yes	11.25	11.25	11.25	0.00	
10/15/11	183	Yes	Yes	Yes	Yes	11.25	11.25	11.25	0.00	
10/15/11	184	Yes	Yes	Yes	Yes	11.25	11.25	11.25	0.00	
10/15/11	185	Yes	Yes	Yes	Yes	11.25	11.25	11.25	0.00	
10/15/11	186	Yes	Yes	Yes	Yes	11.25	11.25	11.25	0.00	
10/15/11	187	Yes	Yes	Yes	Yes	11.25	11.25	11.25	0.00	
10/15/11	188	Yes	Yes	Yes	Yes	11.25	11.25	11.25	0.00	
10/15/11	189	Yes	Yes	Yes	Yes	11.25	11.25	11.25	0.00	
10/15/11	190	Yes	Yes	Yes	Yes	11.25	11.25	11.25	0.00	
10/15/11	191	Yes	Yes	Yes	Yes	11.25	11.25	11.25	0.00	
10/15/11	192	Yes	Yes	Yes	Yes	11.25	11.25	11.25	0.00	
10/15/11	193	Yes	Yes	Yes	Yes	11.25	11.25	11.25	0.00	
10/15/11	194	Yes	Yes	Yes	Yes	11.25	11.25	11.25	0.00	
10/15/11	195	Yes	Yes	Yes	Yes	11.25	11.25	11.25	0.00	
10/15/11	196	Yes	Yes	Yes	Yes	11.25	11.25	11.25	0.00	
10/15/11	197	Yes	Yes	Yes	Yes	11.25	11.25	11.25	0.00	
10/15/11	198	Yes	Yes	Yes	Yes	11.25	11.25	11.25	0.00	
10/15/11	199	Yes	Yes	Yes	Yes	11.25	11.25	11.25	0.00	
10/15/11	200	Yes	Yes	Yes	Yes	11.25	11.25	11.25	0.00	

SAMPLE FLEET REPORT

## DIAGNOSTIC SERVICES

### SAFETY CERTIFICATION

UL 913 Listed Intrinsically Safe for Class I, Division 1, Group D for Hazardous (classified) Locations

### INSPECTION

Trained technician/s will work with refueling personnel during normal working conditions.

### FLEET REPORT

A complete inventory of in-service LP Gas tanks will be listed.

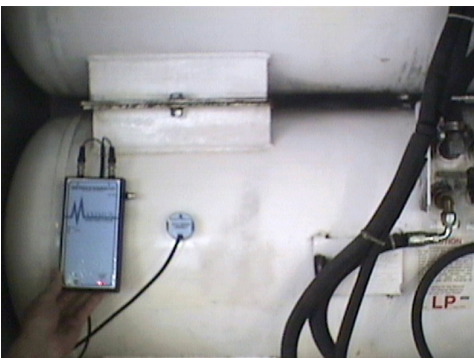
- Failed OPDs will be identified
- # of gallons pumped after reaching fixed liquid level gauge will be reported
- Liquid levels where OPD stopped the flow will be compared with the OPD design specifications

### VERIFICATION CERTIFICATE

A verification certificate will be provided for the vehicles with functional OPDs.

### PRICING

- Pricing depends on fleet size, tank location, and refueling constraints
- Travel expenses will be included on a pass-through basis not to exceed quoted amount.
- Please contact Adept Science & Technologies, LLC for a quote.



LEFT: LIQUID LEVEL FOUND USING MAXIMUS™ OVERFILL DIAGNOSTIC INSTRUMENT ON AN LP GAS BUS TANK. RIGHT: INFRARED PHOTO OF THE SAME SITUATION SHOWS THE TRANSDUCERS CLEARLY AT THE LIQUID LEVEL.

