



OVERFILL DIAGNOSTIC INSTRUMENT

• DUAL CHANNEL •

HAND-HELD ELECTRONICS BOX
(MODEL MAXODIDC)



SENSOR HEAD ASSEMBLIES
(image below is the side that attaches to the tank)



BUS INSTALLATION

MAXIMUS™ SPECIFICATIONS

ENCLOSURE

Easy to hold plastic case
(7.5 in x 4.1 in x 1.2 in)

CERTIFICATION

UL 913 Listed Intrinsically Safe for
Class I, Division 1, Group D for Haz-
ardous (classified) Locations

INSTALLATION

Dual-channel transducers
permanently attached to the tank*

- Top Sensor attached above liquid level limit at ~85% full
- Bottom sensor attached below liquid level limit at ~70% full

Sensor wires are routed to a junction box conveniently located on the side of the vehicle

*Placement depends on OPD valve position

OPERATION

- Push button to activate sensors
- Dual colored LED's (green, red) indicate fill status

POWER

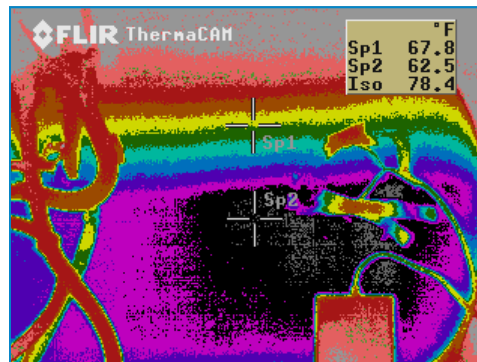
4 AA batteries

CONSUMPTION

Standby	<200µA
Sleep	<20µA
Active	60mA

The **Maximus™ Overfill Diagnostic Instrument** provides a means to verify functionality of overfill protection devices (OPD) in LP Gas tanks. Instrument externally verifies the filling level of LP Gas through innovative sonic technology, resulting in enhanced safety, reduced emissions, and energy conservation.

INFRARED PHOTO OF DUAL CHANNEL
TEST SHOWS THE TRANSDUCERS
CLEARLY STRADDLING THE LIQUID LEVEL



Adept Science & Technologies, LLC

51 Rover Boulevard, Los Alamos, New Mexico 87544 USA

Phone: +1 (505) 672- 0002 • Fax: +1 (505) 672-0003 • E-mail: info@adeptsience.net • Website: www.adeptsience.net